

An update on Ecuador’s national carbon assessment, and its relationship with protected areas and indigenous peoples

Rodríguez-González M. and Torres-Garrido K.

mayra.rodriguez_gonzalez@uconn.edu

Supplementary material

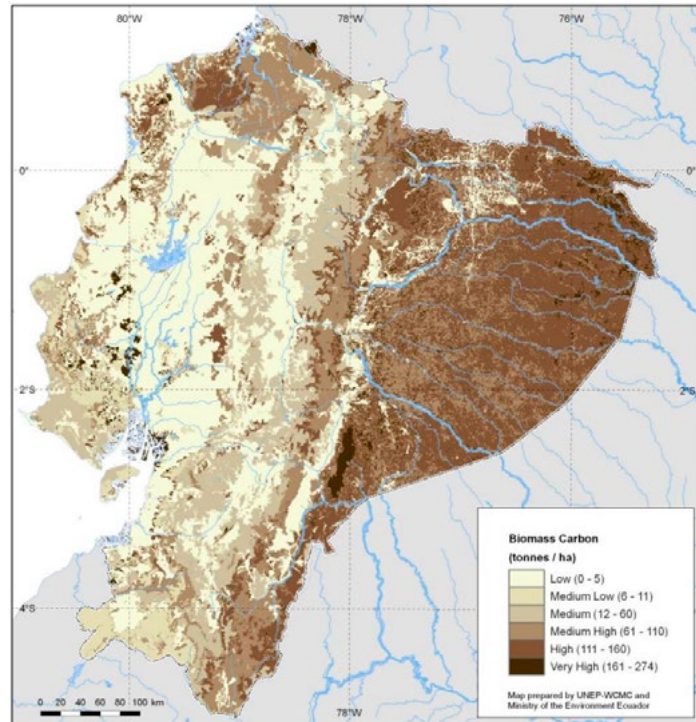


Figure A1. Aboveground carbon, from Bertzky *et al.*, 2010.

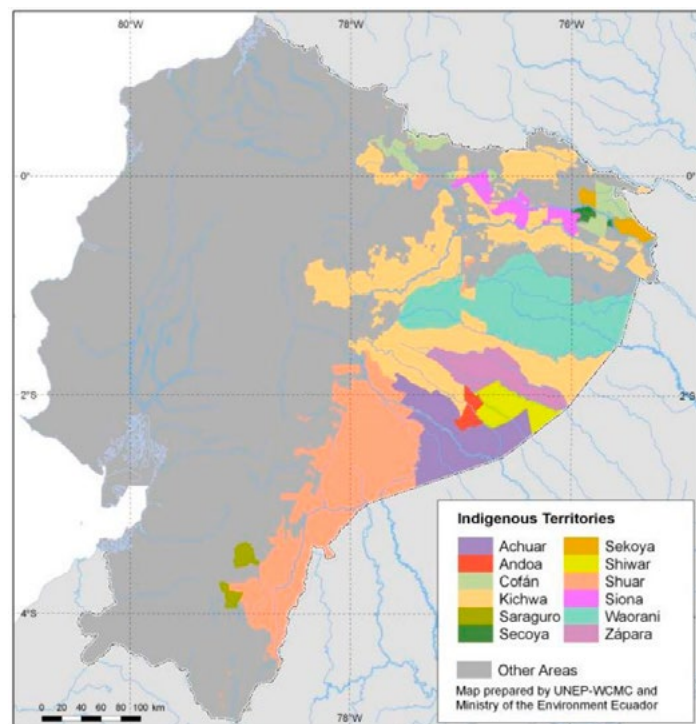


Figure A2. Distribution of indigenous territories, from Bertzky *et al.*, 2010.